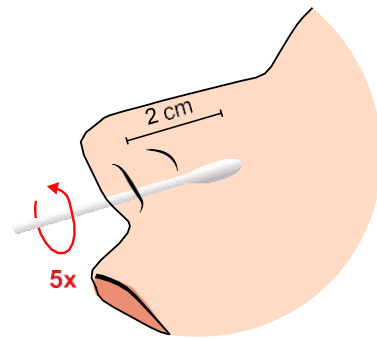
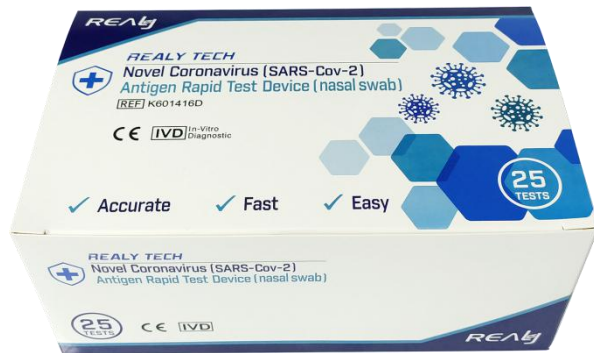


# Novel Coronavirus (SARS-COV-2) Antigen Rapid Test Cassette (Nasal Swab)

REALy

CE

Novel Coronavirus (SARS-Cov-2) Antigen Rapid Test Device (nasal swab) is an in vitro diagnostic test for the qualitative detection Nucleoprotein of Coronavirus Disease 2019 in human nasal swab, using the rapid immunochromatographic method as an aid in the diagnosis of SARS-Cov-2 infections. The identification is based on the monoclonal antibodies specific for the novel coronavirus antigen. It will provide information for clinical doctors to prescribe correct medications.

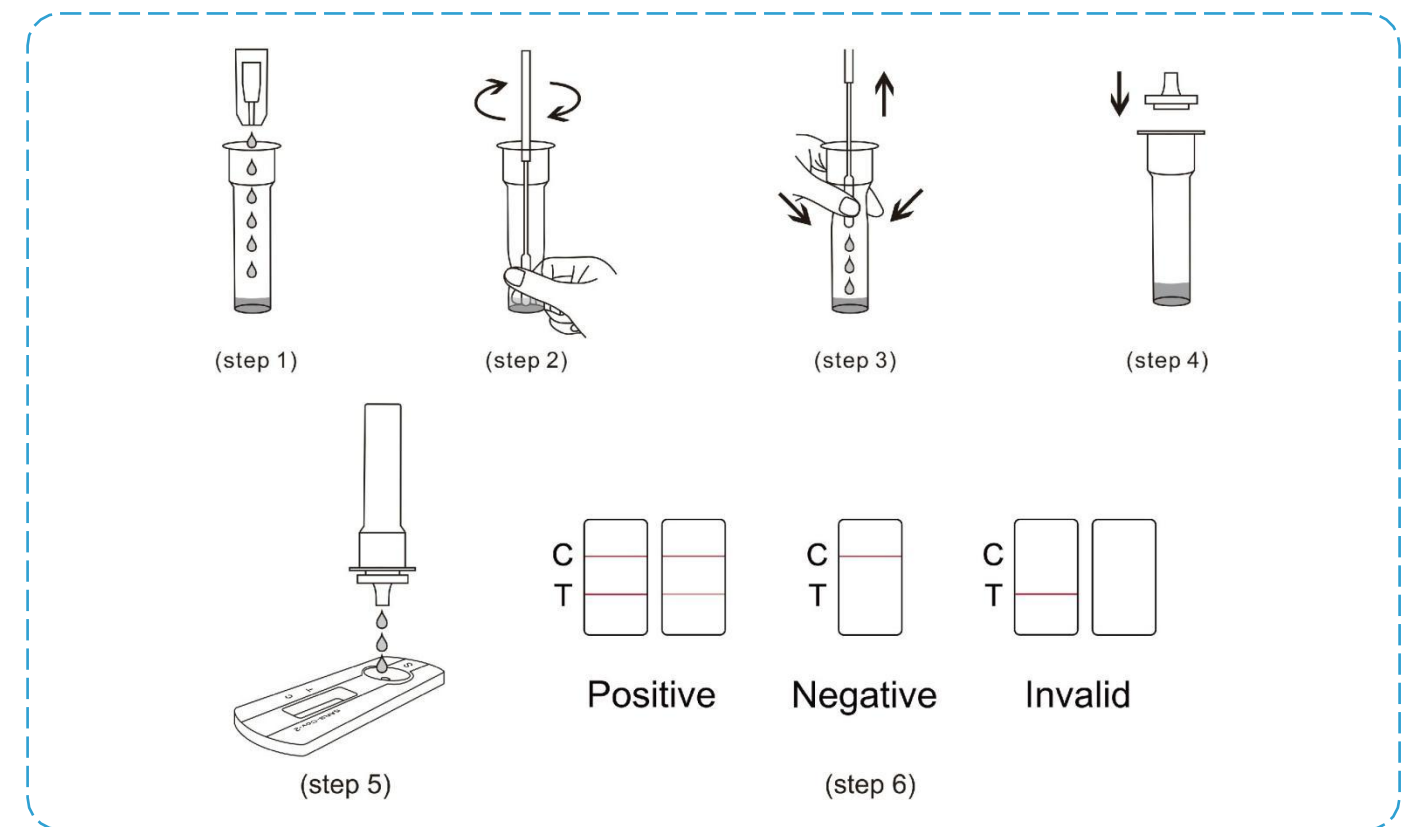


25 Tests/kit

## Features:

- Specimen types: Nasal Swab
- Testing time: 10-15 minutes
- Sensitivity: 95.38 %
- Specificity: >99.9%

## DIRECTIONS FOR USE:



Product name	Ref.	Size	Storage Temp
Novel Coronavirus (SARS-COV-2) Antigen Rapid Test Cassette (Nasal Swab)	K60 <sub>1416D</sub>	25 Test/kit	2-30 C
Novel Coronavirus (SARS-COV-2) Antigen Rapid Test Cassette (Nasal Swab)	K60 <sub>1416D</sub>	5 Test/kit	2-30 C
Novel Coronavirus (SARS-COV-2) Antigen Rapid Test Cassette (Nasal Swab)	K60 <sub>1416D</sub>	1 Test/kit	2-30 C

REALy 睿丽科技